

Geiger's Vertical Solution

9-Step Quick-Start Installation Guide

A complete manual is enclosed with each system. Below are excerpts from the manual that serve as a quick-start guide.

Please be sure to:

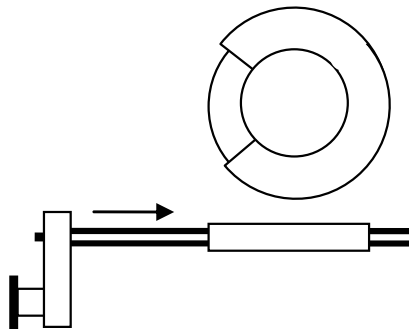
- Unplug the grinder during installation.
- Never run the grinder when using the 60° gage.
- Never run the grinder when using the horizontal positioning gage.
- Always wear eye protection when running a grinder and sharpening tools.
- Practice sharpening with the grinder turned off.
- Always concentrate on keeping the gouge at the center of the wheel.
- Never sharpen tools or run a grinder when under the influence of drugs or alcohol.

Installation Step 1



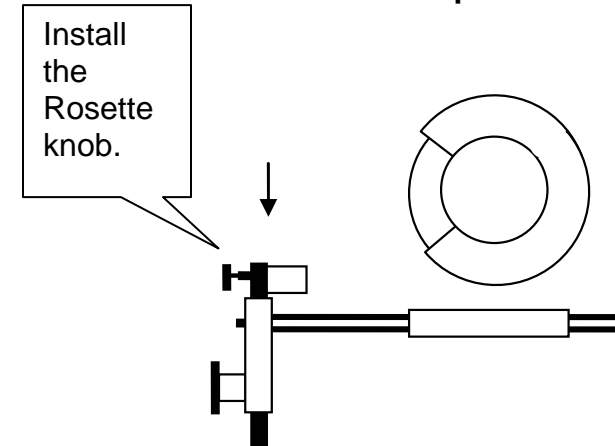
For safety: Un-plug your grinder!

Step 2



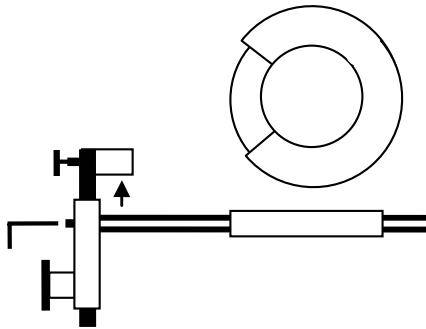
Insert the 16-1/2" long arm, with the label facing upward, into your receiver base.

Step 3



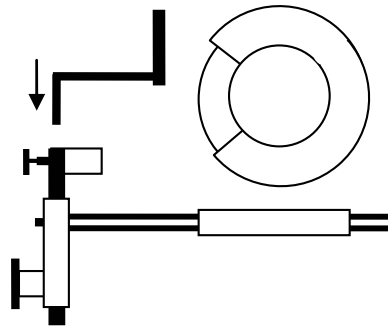
Slide the V-notch into the receiver at the end of the 16-1/2" long arm.

Step 4



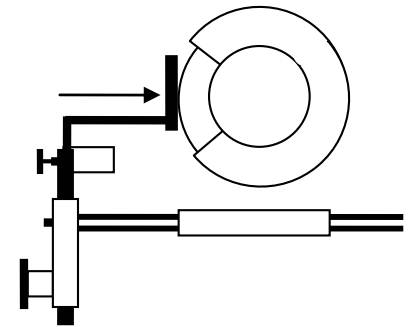
Raise the V-notch ~ 1-1/2" above its resting point and secure it using the hex key/set-screw.

Step 5



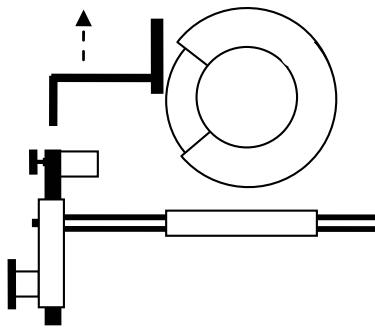
Slide the stem of the horizontal positioning gage into the vertical receiver located behind the V-notch. Secure it using the Rosette knob.

Step 6



Slide the support arm forward until the horizontal gage touches the wheel. Lock into position using the cam on the Wolverine base.

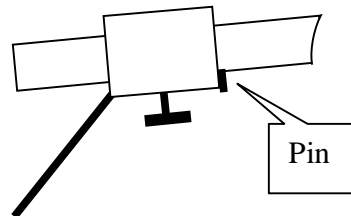
Step 7



Remove the horizontal gage.

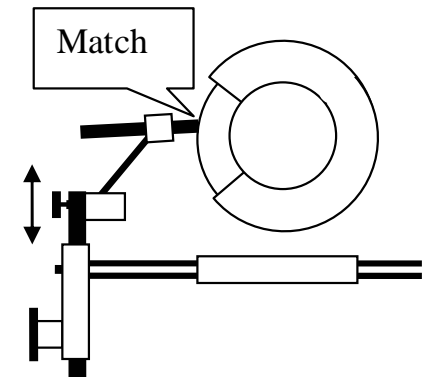
Step 8

NOTE: The grinding wheels must be stationary when using these gages!



Position the 60° gage into the Ellsworth jig as shown. The pin should be located on the bottom and pushed up against the face of the jig. Tighten the knob.

Step 9



Place the stem of the Ellsworth jig into the v-notch. Loosen the set-screw then raise or lower the v-notch position, as necessary, until the bevel of the gage matches your wheel. Tighten the set-screw securely.